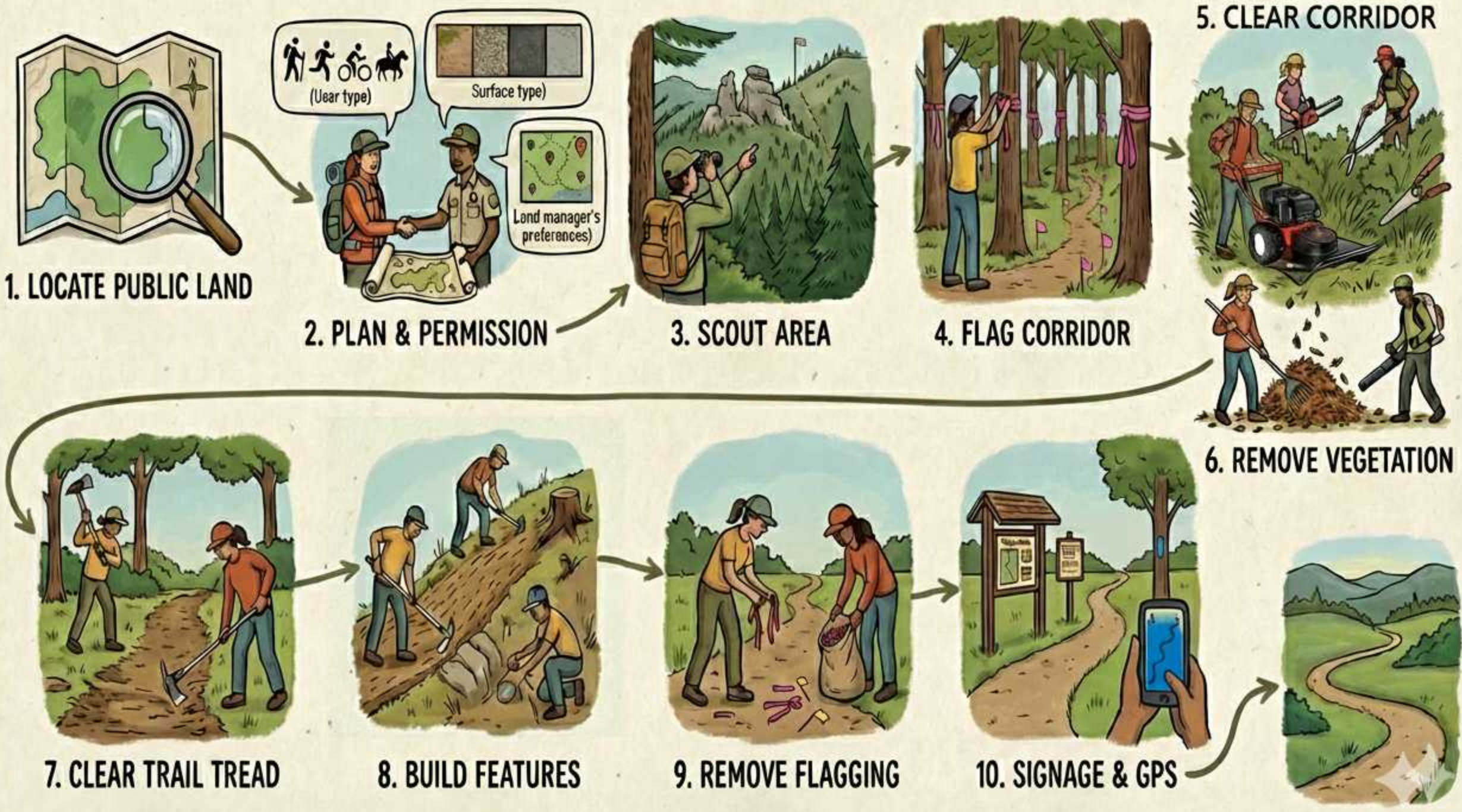


10 BASIC TRAIL BUILDING STEPS



Digital Tools

Smart phone gps apps

- ❖ Android: GPS Logger
- ❖ Apple: myTracks
- ❖ Generic: MapMyRide, Walk, Run
- ❖ Cloud: Strava, All Trails, etc.

Digital Tools

Google Earth

- ❖ **Scouting: feature locations, pins**
- ❖ **Recording gps track**
- ❖ **Importing gps tracks**
- ❖ **KML, KMZ, GPS, GPX**
- ❖ **Route editing**
- ❖ **Route reversal:**
<https://bikehike.co.uk/mapview.php>
- ❖ **Annotations**
- ❖ **Export to graphics software for maps**



GPS and Mapping Tools

Google Earth – kml files, editing, combining, reversing, exporting to svg for mapping

Map.ksmaps.org - find a trail on Kansas Trails Inc map

Apple: myTracks, OpenGPXTracker, MapMyRide, MapMyWalk, MapMyRun

Android: GPS Logger app, MapMyRide, MapMyWalk, MapMyRun

Garmin: watches (Connect)

Stand alone devices: hard to find with no subscriptions

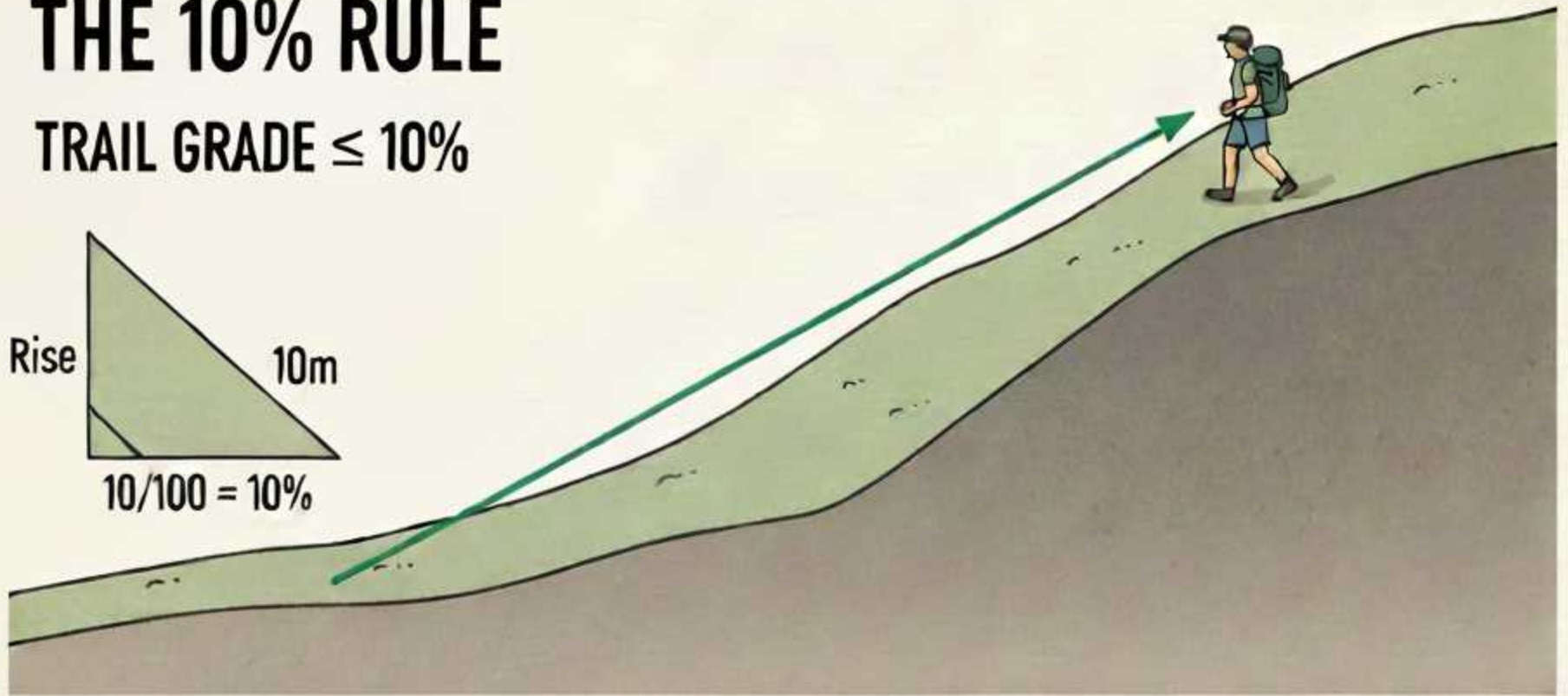
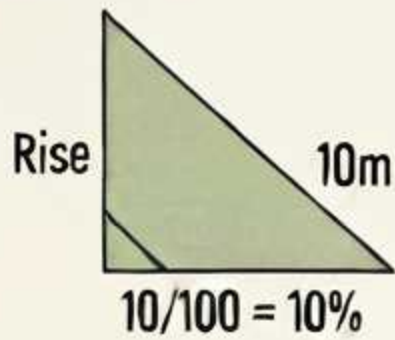
ORKA - Open Records for Kansas Appraisers: <https://www.kansasgis.org/orka/>

Reversing route: <http://bikehike.co.uk/mapview.php>

Converting GPX/GPS to kml: <https://gpx2kml.com/> [Google Earth will load GPS files]

THE 10% RULE

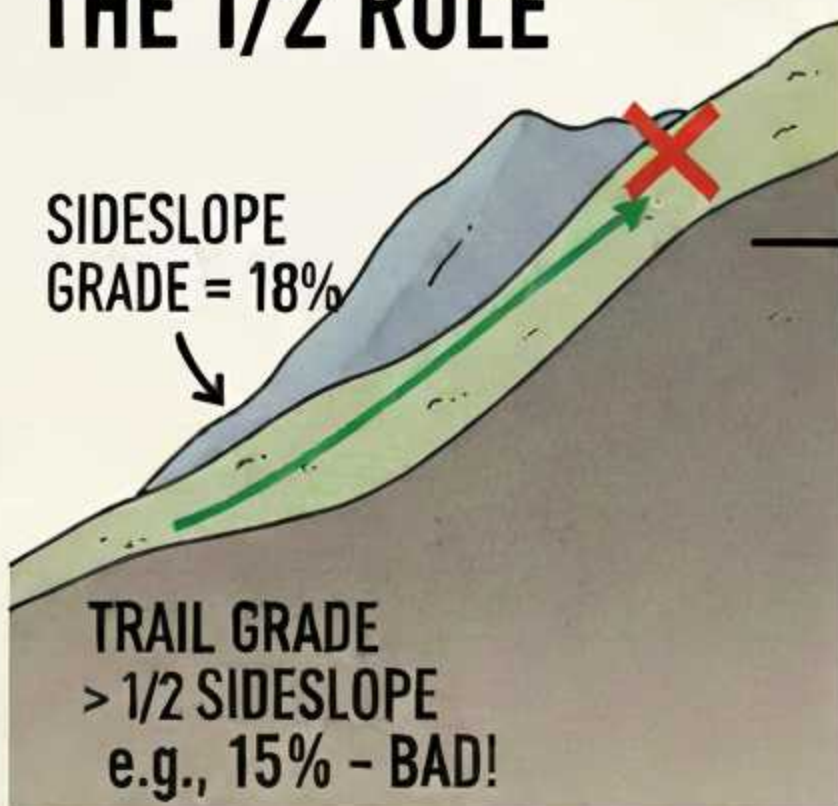
TRAIL GRADE $\leq 10\%$



THE 1/2 RULE

SIDESLOPE
GRADE = 18%

TRAIL GRADE
 $> 1/2$ SIDESLOPE
e.g., 15% - BAD!



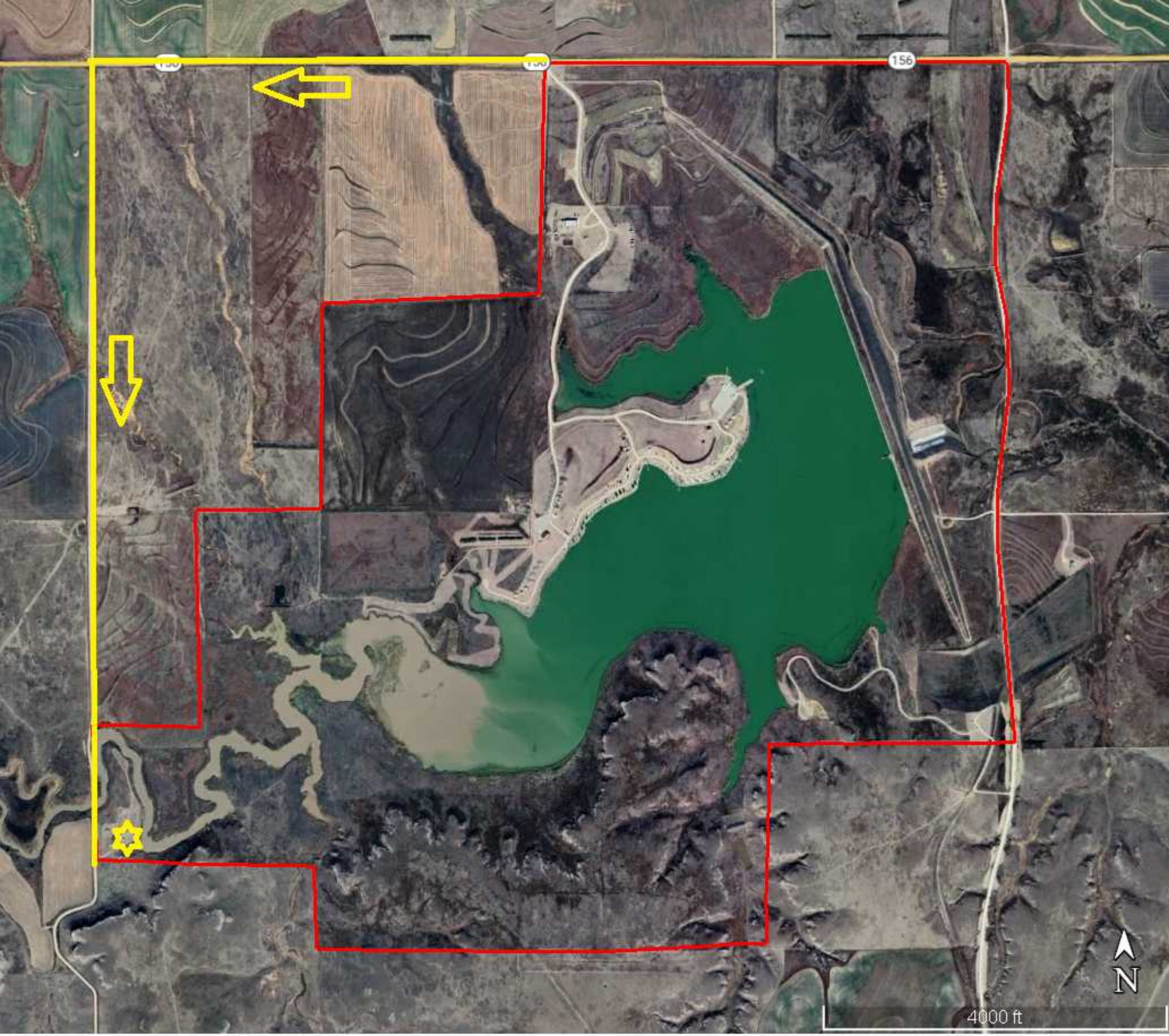
TRAIL GRADE \leq
 $1/2$ SIDESLOPE
e.g., 9% - GOOD!



Benchcut



3-5% Outslope



150

150

156



4000 ft

TrailCraft - Mileage Reimbursement



Name

Mailing Address

Mileage
